

FOR LEASE

JOIN COFFEE BEAN AND FLAME BROILER!

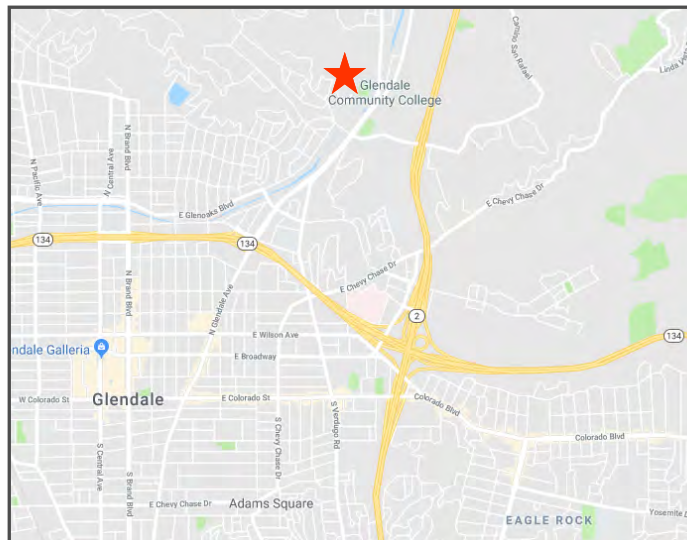


COLLEGE PLAZA



1500 CANADA BLVD | GLENDALE, CA 91208 FEATURES + AMENITIES

- 1,125 SF AVAILABLE NEXT TO COFFEE BEAN AND FLAME BROILER
- POTENTIAL FOR RESTAURANT OR RETAIL USERS
- DIRECTLY ACROSS FROM GLENDALE COLLEGE'S 19,000 STUDENTS AND FACULTY
- OPEN WINDOW LINE DIRECTLY FACING THE COLLEGE ALONG N. VERDUGO
- SHARED PATIO AVAILABLE
- SHOPPING CENTER IS LOCATED AT THE MIDPOINT OF THE SKYBRIDGE CONNECTING GLENDALE COLLEGE'S PRIMARY PARKING AREA TO CAMPUS



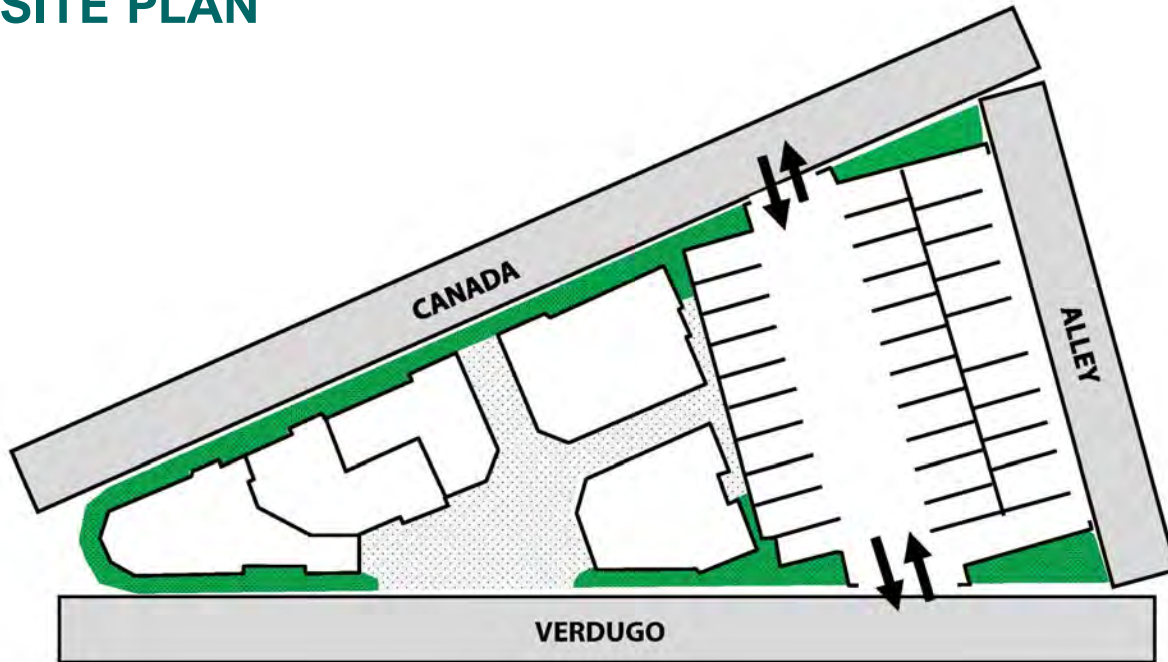
EXCLUSIVELY REPRESENTED BY

DAVE O'CONNELL
CA REAL ESTATE LIC #1398651
818.380.9966 x332
DAVE@CBM1.COM

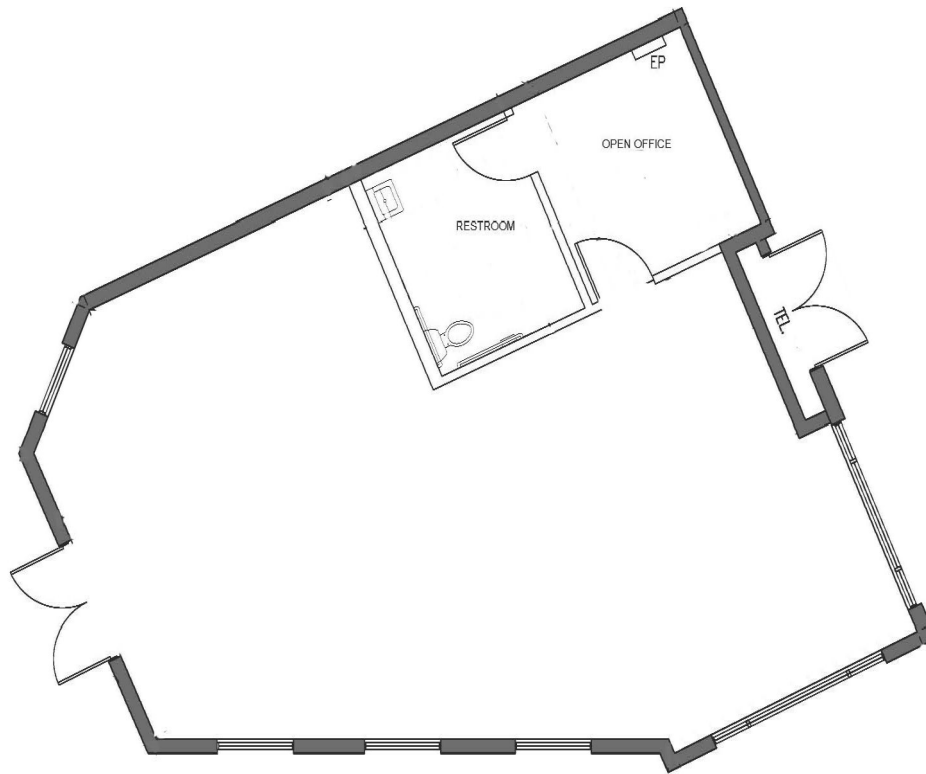
ZAC RYBURN
CA REAL ESTATE LIC #02009969
818.380.9966 x331
ZAC@CBM1.COM

| DEMOGRAPHICS SNAPSHOT | 1-MILE | 3-MILE | 5-MILE |
|-----------------------|-----------|-----------|----------|
| POPULATION | 12,747 | 180,826 | 486,679 |
| AVG HH INCOME | \$150,957 | \$100,884 | \$97,853 |

SITE PLAN



FLOOR PLAN



DAVE O'CONNELL | 818.380.9966 x332 | DAVE@CBM1.COM

AERIAL PHOTO

1500 CANADA BLVD | GLENDALE, CA 91208



DAVE O'CONNELL | 818.380.9966 x332 | DAVE@CBM1.COM

VANILLA SHELL INTERIOR



EXTERIOR ENTRANCE



DAVE O'CONNELL | 818.380.9966 x332 | DAVE@CBM1.COM

| | 1 mile(s) | 3 mile(s) | 5 mile(s) |
|---|-----------|-----------|-----------|
| Population: 2017A | | | |
| Total Population | 12,747 | 180,826 | 486,679 |
| Female Population | 51.98% | 52.63% | 51.61% |
| Male Population | 48.02% | 47.37% | 48.39% |
| Population Density | 4,057 | 6,394 | 6,196 |
| Population Median Age | 47.2 | 43.7 | 40.4 |
| Employed Civilian Population 16+ | 6,650 | 87,776 | 231,404 |
| % White Collar | 80.4% | 72.4% | 67.8% |
| % Blue Collar | 19.6% | 27.6% | 32.2% |
| Total Q2 2017 Employees | 2,834 | 77,477 | 199,155 |
| Total Q2 2017 Establishments* | 422 | 10,135 | 22,622 |
| Population Growth 2000-2010 | 0.11% | -0.94% | -1.02% |
| Population Growth 2017A-2022 | 3.18% | 1.16% | 0.46% |
| Income: 2017A | | | |
| Average Household Income | \$150,957 | \$100,884 | \$97,853 |
| Median Household Income | \$100,171 | \$62,267 | \$61,667 |
| Per Capita Income | \$57,045 | \$39,075 | \$35,618 |
| Avg Income Growth 2000-2010 | 40.49% | 40.35% | 41.72% |
| Avg Income Growth 2017A-2022 | 13.39% | 13.87% | 13.99% |
| Households: 2017A | | | |
| Households | 4,816 | 69,701 | 175,990 |
| Average Household Size | 2.64 | 2.57 | 2.72 |
| Hhld Growth 2000-2010 | -2.18% | 0.87% | 1.85% |
| Hhld Growth 2017A-2022 | 3.34% | 1.93% | 1.92% |
| Housing Units: 2017A | | | |
| Occupied Units | 4,816 | 69,701 | 175,990 |
| % Occupied Units | 99.19% | 97.80% | 97.63% |
| % Vacant Housing Units | 0.81% | 2.20% | 2.37% |
| Owner Occ Housing Growth 2000-2010 | -1.69% | 0.69% | 2.04% |
| Owner Occ Housing Growth 2000-2022 | 1.92% | 1.51% | 4.21% |
| Owner Occ Housing Growth 2017A-2022 | 3.70% | 1.38% | 1.27% |
| Occ Housing Growth 2000-2010 | -2.18% | 0.87% | 1.85% |
| Occ Housing Growth 2010-2022 | 8.26% | 7.81% | 7.87% |
| Occ Housing Growth 2017A-2022 | 3.34% | 1.93% | 1.92% |
| Race and Ethnicity: 2017A | | | |
| % American Indian or Alaska Native Population | 0.16% | 0.30% | 0.53% |
| % Asian Population | 18.71% | 19.82% | 17.00% |
| % Black Population | 1.01% | 1.40% | 4.29% |
| % Hawaiian or Pacific Islander Population | 0.03% | 0.06% | 0.07% |
| % Multirace Population | 4.58% | 4.86% | 5.16% |
| % Other Race Population | 2.50% | 6.17% | 13.69% |
| % White Population | 72.99% | 67.38% | 59.26% |
| % Hispanic Population | 11.78% | 18.14% | 33.41% |
| % Non Hispanic Population | 88.22% | 81.86% | 66.59% |

DAVE O'CONNELL | 818.380.9966 x332 | DAVE@CBM1.COM