

**LONG BEACH REDEVELOPMENT — COMPLETED**



**LOCATED ON THE SEC OF CLARK AVE. & SPRING ST.**

**NEIGHBORING  
BUSINESSES**

**long beach  
airport**



**FEATURES**

- **SHOPPING CENTER REDEVELOPMENT SITE NEAR LONG BEACH AIRPORT.**
- END-CAP & INLINE SPACES AVAILABLE FOR RETAIL & PROFESSIONAL OFFICE.
- PYLON SIGNAGE AVAILABLE.
- CLOSE PROXIMITY TO THE 405 FWY.
- EASY ACCESS FROM CLARK AVE.
- HIGH DAYTIME & EVENING AUTO TRAFFIC.
- **TRAFFIC COUNTS:**  
CLARK AVE. — ±25,000 CPD  
SPRING ST. — ±26,000 CPD  
405 FREEWAY — ±268,000 CPD

**AREA AMENITIES**

- **HIGHLY TRAFFICKED AIRPORT DISTRICT REDEVELOPMENT RESTING ON THE CONVERGENCE OF OFFICE, RETAIL, & RESIDENTIAL CORRIDORS.**
- ADJACENT TO SKYLINKS GOLF COURSE AND THE WARDLOW COMMUNITY PARK.
- **3 MILE DEMOGRAPHICS:**  
INCOME: \$90,124  
POPULATION: 204,123  
EMPLOYEES: 81,550

**CONTACT...**

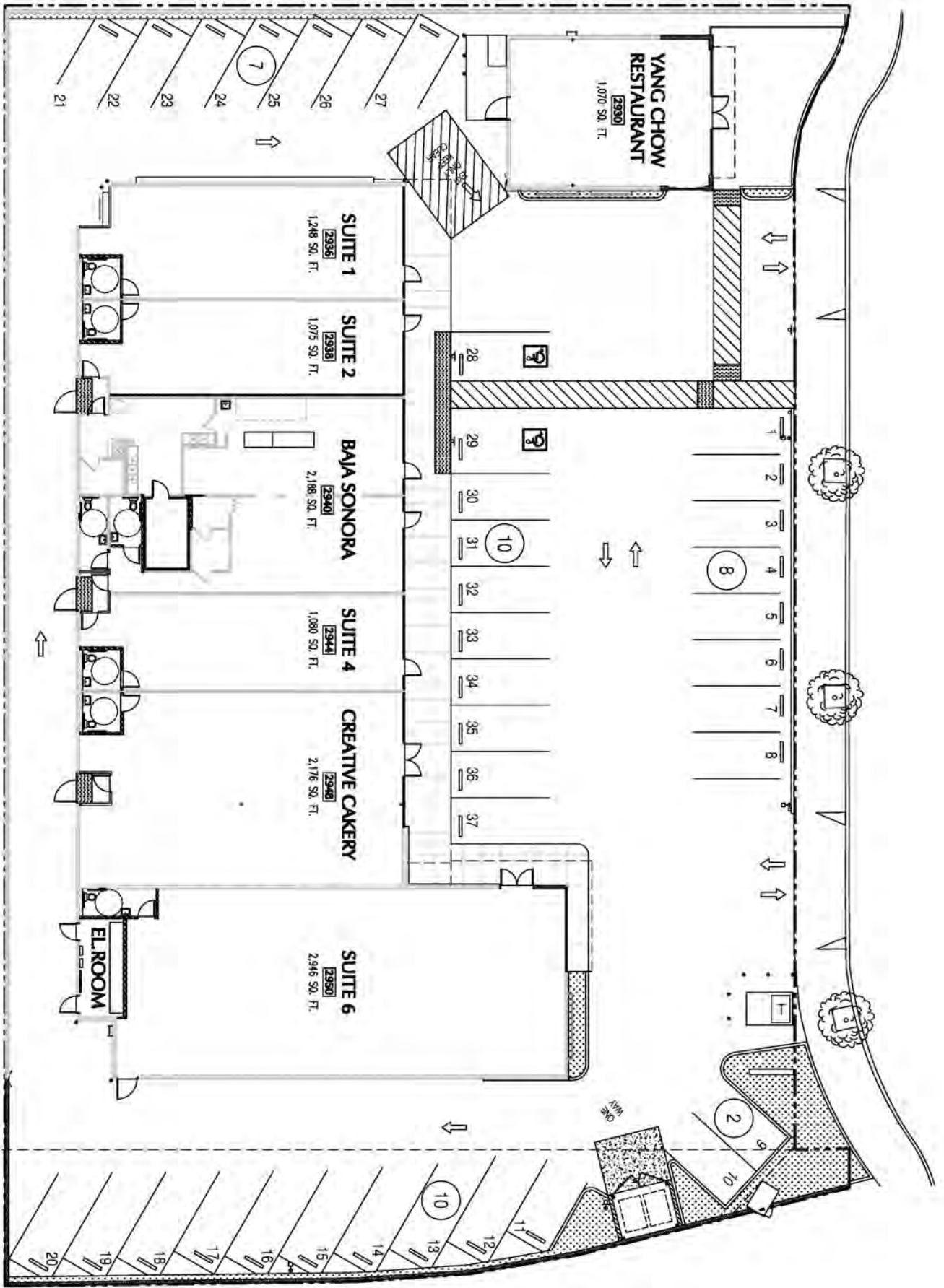
**AARON GUIDO**  
CA REAL ESTATE LIC #0192454  
310.575.1517 x104  
AARON@CBM1.COM

**GEOFFREY GROSSMAN**  
CA REAL ESTATE LIC #1265002  
310.575.1517 x235  
GEOFF@CBM1.COM

**1517 S. SEPULVEDA BLVD.  
LOS ANGELES, CA 90025**

**2930—2950 CLARK AVE.  
LONG BEACH, CA 90815**

**TIME SQUARE**



	1 mile(s)	3 mile(s)	5 mile(s)
<b>Population: 2015B</b>			
Total Population	13,244	204,123	670,794
Female Population	51.56%	51.55%	51.40%
Male Population	48.44%	48.45%	48.60%
Population Density	4,215	7,219	8,540
Population Median Age	42.5	36.5	35.9
Employed Civilian Population 16+	6,228	97,219	308,891
% White Collar	73.8%	66.2%	62.5%
% Blue Collar	26.2%	33.8%	37.5%
Total Employees	7,969	81,550	221,625
Total Establishments*	463	7,116	22,132
Population Growth 2000-2010	3.23%	1.84%	0.66%
Population Growth 2015B-2020	-0.06%	0.57%	0.78%
<b>Income: 2015B</b>			
Average Household Income	\$104,153	\$90,124	\$81,410
Median Household Income	\$80,243	\$66,012	\$56,666
Per Capita Income	\$38,799	\$33,642	\$29,628
Avg Income Growth 2000-2010	44.59%	43.85%	39.73%
Avg Income Growth 2015B-2020	14.71%	15.45%	16.25%
<b>Households: 2015B</b>			
Households	4,882	75,420	241,927
Average Household Size	2.63	2.65	2.73
Hhld Growth 2000-2010	-0.79%	1.07%	0.57%
Hhld Growth 2015B-2020	-0.02%	0.72%	1.19%
<b>Housing Units: 2015B</b>			
Occupied Units	4,882	75,420	241,927
% Occupied Units	99.95%	98.57%	97.20%
% Vacant Housing Units	0.05%	1.43%	2.80%
Owner Occ Housing Growth 2000-2010	-3.28%	1.18%	0.92%
Owner Occ Housing Growth 2000-2020	-1.88%	3.75%	3.83%
Owner Occ Housing Growth 2015B-2020	-0.24%	0.25%	0.61%
Occ Housing Growth 2000-2010	-0.79%	1.07%	0.57%
Occ Housing Growth 2010-2020	2.92%	5.20%	6.24%
Occ Housing Growth 2015B-2020	-0.02%	0.72%	1.19%
<b>Race and Ethnicity: 2015B</b>			
% American Indian or Alaska Native Population	0.42%	0.65%	0.72%
% Asian Population	8.60%	13.85%	15.85%
% Black Population	3.18%	8.61%	11.10%
% Hawaiian or Pacific Islander Population	0.43%	0.58%	0.94%
% Multirace Population	6.43%	6.24%	5.56%
% Other Race Population	6.15%	12.80%	17.40%
% White Population	74.80%	57.28%	48.44%
% Hispanic Population	22.03%	30.13%	37.48%
% Non Hispanic Population	77.97%	69.87%	62.52%